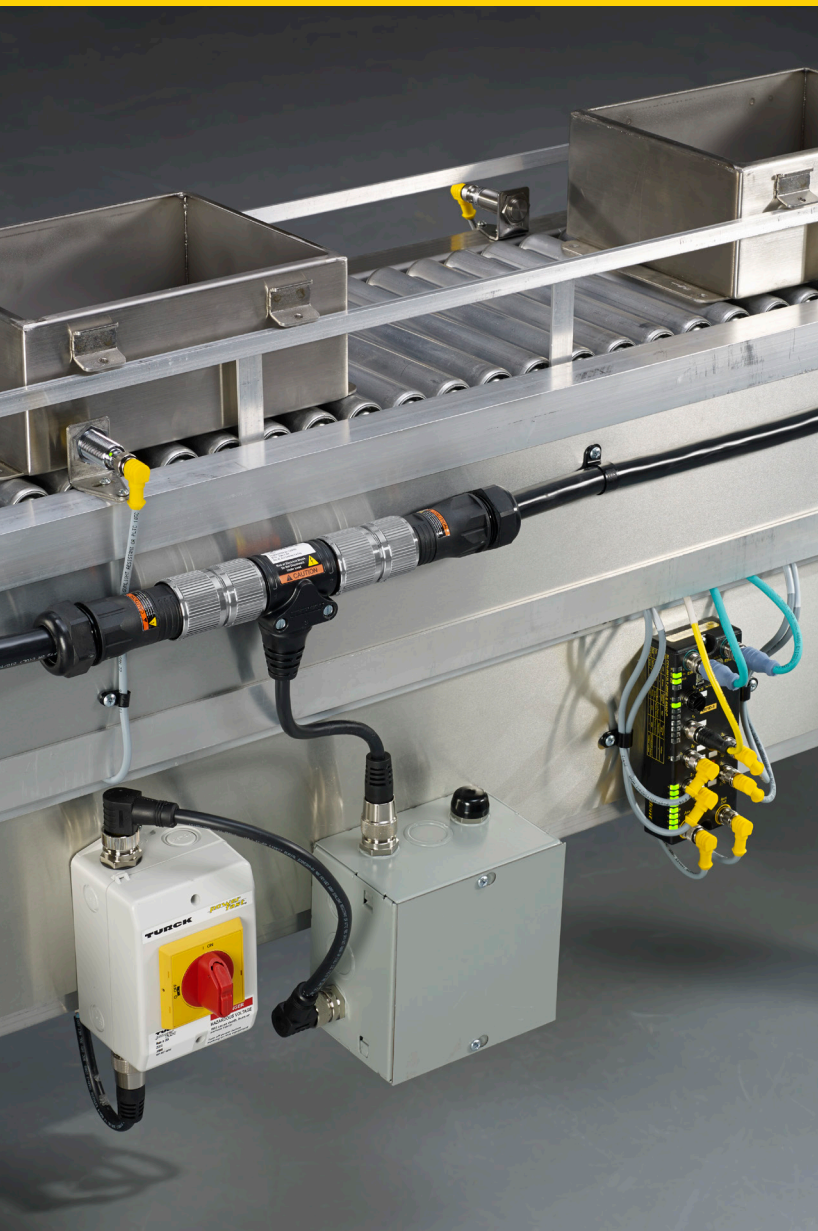


Your Global Automation Partner

# TURCK

## Connectivity In-Stock Program



# TURCK THE SOLUTION PROVIDER

**85,000+** SOLUTIONS

Pioneer in non-contact  
**sensing** technology

Developed innovative **connectivity**  
solutions in response to our sensor customer needs

Recognized need and advanced knowledge of harsh duty  
environments lead to **I/O solutions**

**28** GLOBAL  
SUBSIDIARIES

with **PARTNERS** in  
**60** FURTHER  
COUNTRIES



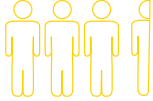
more than  
**2,000** EXPERIENCED  
SALES REPRESENTATIVES

**SUPPORT &  
DEDICATED SERVICE**

**50** YEARS OF EXPERIENCE 2014 2013 2012 2011

**LIFETIME WARRANTY**

RESPOND  
and SOLVE over **1,200** inquiries  
per day

 **3,500+**  
APPLICATION ENGINEERS

www.  
**turck**  
.com

# TABLE OF CONTENTS

<b>Introduction</b>	<b>4</b>
<b>M8 Picofast</b>	<b>5</b>
<b>M12 Eurofast</b>	<b>7</b>
<b>7/8" Minifast</b>	<b>14</b>
<b>M12 Junction Boxes</b>	<b>18</b>
<b>M23 Multifast</b>	<b>19</b>
<b>Splitters</b>	<b>20</b>
<b>Ethernet</b>	<b>21</b>
<b>DeviceNet</b>	<b>23</b>
<b>Valve Plugs</b>	<b>25</b>
<b>A-Size Powerfast</b>	<b>28</b>
<b>D-Size Powerfast</b>	<b>30</b>

# CONNECTIVITY IN-STOCK PROGRAM

At Turck, we have long prided ourselves in being **fast, flexible, and easy** to do business with. We provide an extensive connectivity offering and the ability to do **custom solutions** to meet the demands of any application. Combining these two, we offer the Connectivity In-Stock Program, ensuring you get what you need, when you need it.

Our Connectivity In-Stock Program ensures elevated levels of Turck stock on all of our standard connectivity products, resulting in **quicker shipping times** and fewer headaches for you. Turck is better suited than ever to work with you to develop the **perfect solution** for your application challenges, whether it comes from our In-Stock Program or a customized solution created specifically for your applications unique challenges.

Order from **Turck's Connectivity In-Stock Program**, and rest assured your order is on its way, because Turck works!

# M8 Picofast



SINGLE ENDED CORDSETS				
PIN COUNT	GENDER	PLUG BODY	CABLE TYPE	PRODUCT DESCRIPTION
NICKEL PLATED BRASS COUPLING NUT				
3 Pin	Male	Straight	PVC	PSG 3M-2
				PSG 3M-5
				PSG 3M-10
	Female	Straight	PVC	PKG 3M-2
				PKG 3M-5
				PKG 3M-10
			TPU	PKG 3M-2/S90
				PKG 3M-5/S90
				PKG 3M-10/S90
		Right Angle	PVC	PKW 3M-2
				PKW 3M-5
				PKW 3M-10
TPU	PKW 3M-2/S90			
	PKW 3M-5/S90			
	PKW 3M-10/S90			
4 Pin	Male	Straight	PVC	PSG 4M-2
				PSG 4M-5
				PSG 4M-10
	Female	Straight	PVC	PKG 4M-2
				PKG 4M-5
				PKG 4M-10
			TPU	PKG 4M-2/S90
				PKG 4M-5/S90
				PKG 4M-10/S90
		Right Angle	PVC	PKW 4M-2
				PKW 4M-5
				PKW 4M-10
	TPU	PKW 4M-2/S90		
		PKW 4M-5/S90		
		PKW 4M-10/S90		
STAINLESS STEEL COUPLING NUT				
3 Pin	Male	Straight	PVC	PSGV 3M-2
				PSGV 3M-5
				PSGV 3M-10
	Female	Straight	PVC	PKG 3M-2
				PKG 3M-5
				PKG 3M-10
		TPU	PKG 3M-2/S90	
			PKG 3M-5/S90	
			PKG 3M-10/S90	

M8 Picofast

IN-STOCK PROGRAM

# M8 Picofast



EXTENSION CORDSETS				
PIN COUNT	GENDER	PLUG BODY	CABLE TYPE	PRODUCT DESCRIPTION
NICKEL PLATED BRASS COUPLING NUT				
3 Pin	Male/Female	Straight	PVC	PKG 3M-2-PSG 3M PKG 3M-5-PSG 3M
			TPU	PKG 3M-2-PSG 3M/S90 PKG 3M-5-PSG 3M/S90
4 Pin	Male/Female	Straight	PVC	PKG 4M-2-PSG 4M PKG 4M-5-PSG 4M
			TPU	PKG 4M-2-PSG 4M/S90 PKG 4M-5-PSG 4M/S90
STAINLESS STEEL COUPLING NUT				
3 Pin	Male/Female	Straight	PVC	PKG 3M-2-PSGV 3M PKG 3M-5-PSGV 3M
			TPU	PKG 3M-2-PSGV 3M/S90 PKG 3M-5-PSGV 3M/S90



RECEPTACLES			
PIN COUNT	GENDER	MOUNTING STYLE	PRODUCT DESCRIPTION
NICKEL PLATED BRASS RECEPTACLE HOUSING			
3 Pin	Male	Rear	MFS 3F-0.2
		Front	MFSS 3-0.2
	Female	Front	MFKS 3-0.2
	4 Pin	Male	Rear
Front			MFSS 4-0.2
	Female	Front	MFKS 4-0.2
STAINLESS STEEL RECEPTACLE HOUSING			
3 Pin	Male	Rear	MFSV 3F-0.2
		Front	MFSSV 3-0.2
	Female	Front	MFKSV 3-0.2



FIELD WIREABLES			
PIN COUNT	GENDER	PLUG BODY	PRODUCT DESCRIPTION
3 Pin	Male	Straight	BS 5133-0
	Female	Straight	B 5133-0
4 Pin	Male	Straight	BS 5143-0
	Female	Straight	B 5143-0

M8 Picofast

IN-STOCK PROGRAM



SINGLE ENDED CORDSETS				
PIN COUNT	GENDER	PLUG BODY/ COLOR	CABLE TYPE/ COLOR	PRODUCT DESCRIPTION
NICKEL PLATED BRASS COUPLING NUT				
3 Pin	Male	Straight/ Yellow	PVC/Gray	RS 4T-2
				RS 4T-5
				RS 4T-10
	Female	Straight/ Yellow	PVC/Gray	RK 4T-2
				RK 4T-5
				RK 4T-10
			TPU/Gray	RK 4T-2/S90
				RK 4T-5/S90
				RK 4T-10/S90
		Right Angle/ Yellow	PVC/Gray	WK 4T-2
				WK 4T-5
				WK 4T-10
	TPU/Gray	WK 4T-2/S90		
		WK 4T-5/S90		
		WK 4T-10/S90		
	Right Angle LED/Clear	PVC/Gray	WK 4T-2-P7X2	
			WK 4T-5-P7X2	
			WK 4T-10-P7X2	
4 Pin	Male	Straight/ Yellow	PVC/Gray	RS 4.4T-2
				RS 4.4T-5
				RS 4.4T-10
		Straight/ Black	PVC/Black	RS 4.4T-2/S760/S771
				RS 4.4T-5/S760/S771
				RS 4.4T-10/S760/S771
	Female	Straight/ Yellow	PVC/Gray	RK 4.4T-2
				RK 4.4T-5
				RK 4.4T-10
			TPU/Gray	RK 4.4T-2/S90
				RK 4.4T-5/S90
				RK 4.4T-10/S90
		Straight/ Black	PVC/Black	RK 4.4T-2/S760/S771
				RK 4.4T-5/S760/S771
				RK 4.4T-10/S760/S771
		Right Angle/ Yellow	PVC/Gray	WK 4.4T-2
				WK 4.4T-5
				WK 4.4T-10
	TPU/Gray		WK 4.4T-2/S90	
			WK 4.4T-5/S90	
			WK 4.4T-10/S90	
Right Angle/ Black	PVC/ Black	WK 4.4T-2/S760/S771		
		WK 4.4T-5/S760/S771		
		WK 4.4T-10/S760/S771		

# M12 Eurofast



M12 Eurofast

IN-STOCK PROGRAM

SINGLE ENDED CORDSETS (CONTINUED)				
PIN COUNT	GENDER	PLUG BODY/ COLOR	CABLE TYPE/ COLOR	PRODUCT DESCRIPTION
NICKEL PLATED BRASS COUPLING NUT				
5 Pin	Male	Straight/ Yellow	PVC/Gray	RS 4.5T-2
				RS 4.5T-5
				RS 4.5T-10
		Straight/ Black	PVC/ Black	RS 4.5T-2/S760/S771
				RS 4.5T-5/S760/S771
				RS 4.5T-10/S760/S771
	Female	Straight/ Yellow	PVC/Gray	RK 4.5T-2
				RK 4.5T-5
				RK 4.5T-10
		Straight/Black	PVC/Black	RK 4.5T-2/S760/S771
				RK 4.5T-5/S760/S771
				RK 4.5T-10/S760/S771
		Right Angle/ Yellow	PVC/Gray	WK 4.5T-2
				WK 4.5T-5
				WK 4.5T-10
Right Angle/ Black	PVC/Black	WK 4.5T-2/S760/S771		
		WK 4.5T-5/S760/S771		
		WK 4.5T-10/S760/S771		
8 Pin	Male	Straight/ Yellow	PVC/Gray	RSC 8T-2
				RSC 8T-5
				RSC 8T-10
	Female	Straight/ Yellow	PVC/Gray	RKC 8T-2
				RKC 8T-5
				RKC 8T-10





SINGLE ENDED CORDSETS (CONTINUED)					
PIN COUNT	GENDER	PLUG BODY/ COLOR	CABLE TYPE/ COLOR	PRODUCT DESCRIPTION	
STAINLESS STEEL COUPLING NUT					
3 Pin	Male	Straight/ Yellow	PVC/Gray	RSV 4T-2	
				RSV 4T-5	
				RSV 4T-10	
	Female	Straight/ Yellow	PVC/Gray	RKV 4T-2	
				RKV 4T-5	
				RKV 4T-10	
			TPU/Gray	RKV 4T-2/S90	
				RKV 4T-5/S90	
				RKV 4T-10/S90	
		Right Angle/ Yellow	PVC/Gray	WKV 4T-2	
				WKV 4T-5	
				WKV 4T-10	
	TPU/Gray		WKV 4T-2/S90		
			WKV 4T-5/S90		
			WKV 4T-10/S90		
	Right Angle LED/ Clear	PVC/Gray	WKV 4T-2-P7X2		
			WKV 4T-5-P7X2		
			WKV 4T-10-P7X2		
4 Pin	Male	Straight/ Yellow	PVC/Gray	RSV 4.4T-2	
				RSV 4.4T-5	
				RSV 4.4T-10	
	Female	Straight/ Yellow	PVC/Gray	RKV 4.4T-2	
				RKV 4.4T-5	
				RKV 4.4T-10	
			TPU/Gray	RKV 4.4T-2/S90	
				RKV 4.4T-5/S90	
				RKV 4.4T-10/S90	
		Right Angle/ Yellow	PVC/Gray	WKV 4.4T-2	
				WKV 4.4T-5	
				WKV 4.4T-10	
	TPU/Gray		WKV 4.4T-2/S90		
			WKV 4.4T-5/S90		
			WKV 4.4T-10/S90		
	5 Pin	Male	Straight/ Yellow	PVC/Gray	RSV 4.5T-2
					RSV 4.5T-5
					RSV 4.5T-10
Female		Straight/ Yellow	PVC/Gray	RKV 4.5T-2	
				RKV 4.5T-5	
				RKV 4.5T-10	
		Right Angle/ Yellow	PVC/Gray	WKV 4.5T-2	
				WKV 4.5T-5	
				WKV 4.5T-10	

# M12 Eurofast



M12 Eurofast

IN-STOCK PROGRAM

EXTENSION CORDSETS				
PIN COUNT	GENDER	PLUG BODY/ COLOR	CABLE TYPE/ COLOR	PRODUCT DESCRIPTION
NICKEL PLATED BRASS COUPLING NUT				
3 Pin	Male/Female	Straight/Yellow	PVC/Gray	RK 4T-1-RS 4T
				RK 4T-2-RS 4T
				RK 4T-5-RS 4T
			TPU/Gray	RK 4T-1-RS 4T/S90
				RK 4T-2-RS 4T/S90
				RK 4T-5-RS 4T/S90
4 Pin	Male/Female	Straight/Yellow	PVC/Gray	RK 4.4T-1-RS 4.4T
				RK 4.4T-2-RS 4.4T
				RK 4.4T-5-RS 4.4T
			TPU/Gray	RK 4.4T-1-RS 4.4T/S90
				RK 4.4T-2-RS 4.4T/S90
				RK 4.4T-5-RS 4.4T/S90
		Straight/Black	PVC/ Black	RK 4.4T-1-RS 4.4T/S760/S771
				RK 4.4T-2-RS 4.4T/S760/S771
				RK 4.4T-5-RS 4.4T/S760/S771
5 Pin	Male/Female	Straight/Yellow	PVC/Gray	RK 4.5T-1-RS 4.5T
				RK 4.5T-2-RS 4.5T
				RK 4.5T-5-RS 4.5T
		Straight/Black	PVC/Black	RK 4.5T-1-RS 4.5T/S760/S771
				RK 4.5T-2-RS 4.5T/S760/S771
				RK 4.5T-5-RS 4.5T/S760/S771
8 Pin	Male/Female	Straight/Yellow	PVC/Gray	RKC 8T-1-RSC 8T
				RKC 8T-2-RSC 8T
				RKC 8T-5-RSC 8T
STAINLESS STEEL COUPLING NUT				
4 Pin	Male/Female	Straight/Yellow	PVC/Gray	RKV 4.4T-2-RSV 4.4T
				RKV 4.4T-5-RSV 4.4T
5 Pin	Male/Female	Straight/Yellow	PVC/Gray	RKV 4.5T-2-RSV 4.5T
				RKV 4.5T-5-RSV 4.5T

# M12 Eurofast

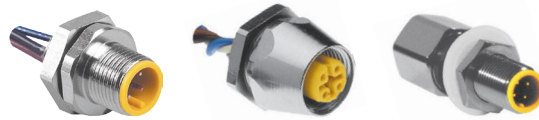


RECEPTACLES				
PIN COUNT	GENDER	MOUNTING STYLE	PRODUCT DESCRIPTION	
NICKEL PLATED BRASS RECEPTACLE HOUSING				
4 Pin	Male	Front	FS 4.4-0.5	
			FS 4.4-0.5/18.25	
	FS 4.4-0.5/14.5/NPT			
	Female	Rear	Front	FSFD 4.4-0.5
				FK 4.4-0.5
		Feed-Thru	Rear	FK 4.4-0.5/18.25
				FK 4.4-0.5/14.5/NPT
FKFD 4.4-0.5				
FK FS 4.4/M12				
5 Pin	Male	Front	FS 4.5-0.5	
			FS 4.5-0.5/18.25	
	FS 4.5-0.5/14.5/NPT			
	Female	Rear	Front	FSFD 4.5-0.5
				FK 4.5-0.5
		Feed-Thru	Rear	FK 4.5-0.5/18.25
				FK 4.5-0.5/14.5/NPT
FKFD 4.5-0.5				
FK FS 4.5/M12				
8 Pin	Male	Front	FS 8-0.5	
			FS 8-0.5/18.25	
	FS 8-0.5/14.5/NPT			
	Female	Rear	Front	FSFD 8-0.5
				FK 8-0.5
		Feed-Thru	Rear	FK 8-0.5/18.25
				FK 8-0.5/14.5/NPT
FKFD 8-0.5				
FK FS 8/M12				

M12 Eurofast

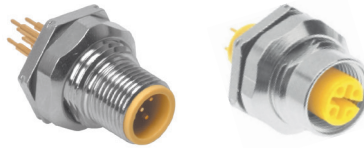
IN-STOCK PROGRAM

# M12 Eurofast



M12 Eurofast

RECEPTACLES (CONTINUED)				
PIN COUNT	GENDER	MOUNTING STYLE	PRODUCT DESCRIPTION	
STAINLESS STEEL RECEPTACLE HOUSING				
4 Pin	Male	Front	FSV 4.4-0.5	
			FSV 4.4-0.5/18.25	
	FSV 4.4-0.5/14.5/NPT			
	Female	Front	FKV 4.4-0.5	
			FKV 4.4-0.5/18.25	
		FKV 4.4-0.5/14.5/NPT		
Rear		FKFDV 4.4-0.5		
Male to Female	Feed-Thru	FKV FSV 4.4/M12		
5 Pin	Male	Front	FSV 4.5-0.5	
			FSV 4.5-0.5/18.25	
			FSV 4.5-0.5/14.5/NPT	
	Female	Front	FKV 4.5-0.5	
			FKV 4.5-0.5/18.25	
		FKV 4.5-0.5/14.5/NPT		
		Rear	FKFDV 4.5-0.5	
	Male to Female	Feed-Thru	FKV FSV 4.5/M12	



PCB PIN RECEPTACLES				
PIN COUNT	GENDER	MOUNTING STYLE	PIN STYLE	PRODUCT DESCRIPTION
4 Pin	Male	Rear	Short Pin	FSFDK 4.4
			Long Pin	FSFD 4.4
5 Pin	Male	Rear	Short Pin	FSFDK 4.5
			Long Pin	FSFD 4.5
	Female	Rear	Short Pin	FKFDK 4.5
			Long Pin	FKFD 4.5
8 Pin	Male	Rear	Short Pin	FSFDK 8-PCB
			Long Pin	FSFD 8
	Female	Rear	Short Pin	FKFDK 8-PCB
			Long Pin	FKFD 8

IN-STOCK PROGRAM

# M12 Eurofast



FIELD WIREABLES			
PIN COUNT	GENDER	PLUG BODY	PRODUCT DESCRIPTION
4 Pin	Male	Straight	BS 8141-0
			BS 8141-0/PG 9
	Female	Right Angle	BS 8241-0
		Straight	B 8141-0
			B 8141-0/PG 9
		Right Angle	B 8241-0
5 Pin	Male	Straight	BS 8151-0/PG9
		Right Angle	BS 8251-0/PG9
	Female	Straight	B 8151-0/PG9
		Right Angle	B 8251-0/PG9

M12 Eurofast

IN-STOCK PROGRAM

# 7/8" Minifast



7/8" Minifast

IN-STOCK PROGRAM

SINGLE ENDED CORDSETS				
PIN COUNT	GENDER	PLUG BODY	CABLE TYPE & SIZE	PRODUCT DESCRIPTION
NICKEL PLATED BRASS COUPLING NUT				
3 Pin	Male	Straight	PVC/18 AWG	RSM 30-2M
				RSM 30-5M
				RSM 30-10M
			PVC/16 AWG	RSM 36-2M
				RSM 36-5M
				RSM 36-10M
	Female	Straight	PVC/18 AWG	RKM 30-2M
				RKM 30-5M
				RKM 30-10M
			PVC/16 AWG	RKM 36-2M
				RKM 36-5M
				RKM 36-10M
4 Pin	Male	Straight	PVC/18 AWG	RSM 40-2M
				RSM 40-5M
				RSM 40-10M
			PVC/16 AWG	RSM 46-2M
				RSM 46-5M
				RSM 46-10M
	Female	Straight	PVC/18 AWG	RKM 40-2M
				RKM 40-5M
				RKM 40-10M
			PVC/16 AWG	RKM 46-2M
				RKM 46-5M
				RKM 46-10M
5 Pin	Male	Straight	PVC/18 AWG	RSM 50-2M
				RSM 50-5M
				RSM 50-10M
			PVC/16 AWG	RSM 56-2M
				RSM 56-5M
				RSM 56-10M
	Female	Straight	PVC/18 AWG	RKM 50-2M
				RKM 50-5M
				RKM 50-10M
			PVC/16 AWG	RKM 56-2M
				RKM 56-5M
				RKM 56-10M

# 7/8" Minifast



SINGLE ENDED CORDSETS (CONTINUED)				
PIN COUNT	GENDER	PLUG BODY	CABLE TYPE & SIZE	PRODUCT DESCRIPTION
STAINLESS STEEL COUPLING NUT				
3 Pin	Male	Straight	PVC/18 AWG	RSV 30-5M
	Female		PVC/18 AWG	RKV 30-5M
4 Pin	Male	Straight	PVC/18 AWG	RSV 40-5M
	Female		PVC/18 AWG	RKV 40-5M
5 Pin	Male	Straight	PVC/18 AWG	RSV 50-5M
	Female		PVC/18 AWG	RKV 50-5M

7/8" Minifast

IN-STOCK PROGRAM

# 7/8" Minifast



EXTENSION CORDSETS				
PIN COUNT	GENDER	PLUG BODY	CABLE TYPE & SIZE	PRODUCT DESCRIPTION
3 Pin	Male/Female	Straight	PVC/18 AWG	RSM RKM 30-2M
				RSM RKM 30-5M
			PVC/16 AWG	RSM RKM 36-2M
				RSM RKM 36-5M
4 Pin	Male/Female	Straight	PVC/18 AWG	RSM RKM 40-2M
				RSM RKM 40-5M
			PVC/16 AWG	RSM RKM 46-2M
				RSM RKM 46-5M
5 Pin	Male/Female	Straight	PVC/18 AWG	RSM RKM 50-2M
				RSM RKM 50-5M
			PVC/16 AWG	RSM RKM 56-2M
				RSM RKM 56-5M



RECEPTACLES				
PIN COUNT	GENDER	MOUNTING STYLE	AWG	PRODUCT DESCRIPTION
3 Pin	Male	Front	18 AWG	RSF 30-1M
				RSF 30-1M/NPT
			16 AWG	RSF 36-1M
				RSF 36-1M/NPT
	Female	Front	18 AWG	RKF 30-1M
				RKF 30-1M/NPT
			16 AWG	RKF 36-1M
				RKF 36-1M/NPT
Male to Female	Feed-Thru	18 AWG	RSF RKF 30/22	

7/8" Minifast

IN-STOCK PROGRAM



RECEPTACLES (CONTINUED)				
PIN COUNT	GENDER	MOUNTING STYLE	AWG	PRODUCT DESCRIPTION
4 Pin	Male	Front	18 AWG	RSF 40-1M
				RSF 40-1M/NPT
			16 AWG	RSF 46-1M
	RSF 46-1M/NPT			
	Female	Front	18 AWG	RKF 40-1M
				RKF 40-1M/NPT
16 AWG			RKF 46-1M	
	RKF 46-1M/NPT			
Male to Female	Feed-Thru	18 AWG	RSF RKF 40/22	
5 Pin	Male	Front	18 AWG	RSF 50-1M
				RSF 50-1M/NPT
			16 AWG	RSF 56-1M
	RSF 56-1M/NPT			
	Female	Front	18 AWG	RKF 50-1M
				RKF 50-1M/NPT
16 AWG			RKF 56-1M	
	RKF 56-1M/NPT			
Male to Female	Feed-Thru	18 AWG	RSF RKF 50/22	



FIELD WIREABLES			
PIN COUNT	GENDER	PLUG BODY	PRODUCT DESCRIPTION
3 Pin	Male	Straight	BS 4131-0/9
			BS 4131-0/13.5
	Female	Straight	B 4131-0/9
			B 4131-0/13.5
4 Pin	Male	Straight	BS 4141-0/9
			BS 4141-0/13.5
	Female	Straight	B 4141-0/9
			B 4141-0/13.5
5 Pin	Male	Straight	BS 4151-0/9
			BS 4151-0/13.5
	Female	Straight	B 4151-0/9
			B 4151-0/13.5

# M12 Junction Boxes



M12 JUNCTION BOXES

IN-STOCK PROGRAM

M12 JUNCTION BOXES			
# OF PORTS	SIGNALS PER PORT	HOMERUN CONNECTOR	PRODUCT DESCRIPTION
4-Port	1 Signal Per Port	Top Exit 12-Pin <b>multifast</b>	4MB12Z-4-CS12
		Side Exit 12-Pin <b>multifast</b>	4MB12Z-4-CS12H
	1 Signal Per Port/ PNP LED	Top Exit 12-Pin <b>multifast</b>	4MB12Z-4P2-CS12
		Side Exit 12-Pin <b>multifast</b>	4MB12Z-4P2-CS12H
	2 Signals Per Port	Top Exit 19-Pin <b>multifast</b>	4MB12Z-5-CS19
		Side Exit 19-Pin <b>multifast</b>	4MB12Z-5-CS19H
2 Signals Per Port/ PNP LED	Top Exit 19-Pin <b>multifast</b>	4MB12Z-5P3-CS19	
	Side Exit 19-Pin <b>multifast</b>	4MB12Z-5P3-CS19H	
6-Port	1 Signal Per Port	Top Exit 12-Pin <b>multifast</b>	6MB12Z-4-CS12
		Side Exit 12-Pin <b>multifast</b>	6MB12Z-4-CS12H
	1 Signal Per Port/ PNP LED	Top Exit 12-Pin <b>multifast</b>	6MB12Z-4P2-CS12
		Side Exit 12-Pin <b>multifast</b>	6MB12Z-4P2-CS12H
	2 Signals Per Port	Top Exit 19-Pin <b>multifast</b>	6MB12Z-5-CS19
		Side Exit 19-Pin <b>multifast</b>	6MB12Z-5-CS19H
2 Signals Per Port/ PNP LED	Top Exit 19-Pin <b>multifast</b>	6MB12Z-5P3-CS19	
	Side Exit 19-Pin <b>multifast</b>	6MB12Z-5P3-CS19H	
8-Port	1 Signal Per Port	Top Exit 12-Pin <b>multifast</b>	8MB12Z-4-CS12
		Side Exit 12-Pin <b>multifast</b>	8MB12Z-4-CS12H
	1 Signal Per Port/ PNP LED	Top Exit 12-Pin <b>multifast</b>	8MB12Z-4P2-CS12
		Side Exit 12-Pin <b>multifast</b>	8MB12Z-4P2-CS12H
	2 Signals Per Port	Top Exit 19-Pin <b>multifast</b>	8MB12Z-5-CS19
		Side Exit 19-pin <b>multifast</b>	8MB12Z-5-CS19H
2 Signals Per Port/ PNP LED	Top Exit 19-Pin <b>multifast</b>	8MB12Z-5P3-CS19	
	Side Exit 19-Pin <b>multifast</b>	8MB12Z-5P3-CS19H	



SINGLE ENDED CORDSETS				
PIN COUNT	GENDER	PLUG BODY	CABLE TYPE	PRODUCT DESCRIPTION
12 Pin	Female	Straight	PVC	CKCM 12-7-5
				CKCM 12-7-10
				CKCM 12-9-5
				CKCM 12-9-10
				CKCM 12-11-5
				CKCM 12-11-10
19 Pin	Female	Straight	PVC	CKM 19-11-5
				CKM 19-11-10
				CKM 19-15-5
				CKM 19-15-10
				CKM 19-19-5
				CKM 19-19-10



EXTENSION CORDSETS				
PIN COUNT	GENDER	PLUG BODY	CABLE TYPE	PRODUCT DESCRIPTION
12 Pin	Male/Female	Straight	PVC	CSCM CKCM 12-11-5
19 Pin	Male/Female	Straight	PVC	CSM CKM 19-19-5



RECEPTACLES			
PIN COUNT	GENDER	MOUNTING STYLE	PRODUCT DESCRIPTION
12 pin	Female	Front	CKCF 12-11-1
19 pin	Female	Front	CKF 19-19-1

# Splitters



VB2 SPLITTERS		
HOMERUN CONNECTOR/ PORT CONNECTORS	WIRING	PRODUCT DESCRIPTION
Integral M12/Integral M12	Standard 4-Wire	VB2-FSM 4.4/2FKM 4
	Parallel 4-Wire	VB2-FSM 4.4/2FKM 4.4/S651
	Series 4-Wire	VB2-FSM 4.4/2FKM 4/S719
	Parallel 5-Wire	VB2-FSM 4.5/2FKM 4.5/S651
	Standard 4-Wire/PNP LED	VB2-PX3-FSM 4.4/2FKM 4



YB2 SPLITTERS		
HOMERUN CONNECTOR/ PORT CONNECTORS	WIRING	PRODUCT DESCRIPTION
Integral M12/Integral M12	Standard 5-Wire	YB2-FSM 4.5-2FKM 4.5
	Standard 5-Wire	YB2-FSM 4.5-2FKM 4.5/S1063
Integral M12/Integral M8	Standard 4-Wire	YB2-FSM 4.4/2PKG 3M



VBRS SPLITTERS		
HOMERUN CONNECTOR/ PORT CONNECTORS	WIRING	PRODUCT DESCRIPTION
Integral M12/M12 Cables	Standard 4-Wire	VBRS 4.4-2RK 4T-0.3/0.3
Integral M12/M8 Cables	Standard 4-Wire	VBRS 4.4-2PKG 3M-0.3/0.3
Integral M12/Integral M8	Standard 4-Wire	VBRS 4.4-2SKM 3

SPLITTERS

IN-STOCK PROGRAM



ETHERNET PATCH CORDS		
CABLE TYPE	TERMINATION TYPE	PRODUCT DESCRIPTION
440 - Stranded Unshielded/2 Pair	RJ45/RJ45	RJ45 RJ45 440-1M
		RJ45 RJ45 440-2M
	M12/M12	RSCD RSCD 440-1M
		RSCD RSCD 440-2M
		RSCD RSCD 440-5M
		RSCD RSCD 440-10M
		RSCD RSCD 440-20M
	M12/RJ45	RSCD RJ45 440-2M
		RSCD RJ45 440-5M
		RSCD RJ45 440-10M
441 - Stranded Shielded/2 Pair	RJ45/RJ45	RJ45S RJ45S 441-1M
		RJ45S RJ45S 441-2M
		RJ45S RJ45S 441-5M
		RJ45S RJ45S 441-10M
	M12/M12	RSSD RSSD 441-1M
		RSSD RSSD 441-2M
		RSSD RSSD 441-5M
		RSSD RSSD 441-10M
		RSSD RSSD 441-20M
	M12/RJ45	RSSD RJ45S 441-1M
		RSSD RJ45S 441-2M
		RSSD RJ45S 441-5M
		RSSD RJ45S 441-10M
4413 - Stranded Shielded/2 Pair	M8/M8	PSGS 4M PSGS 4M 4413-0.2M
		PSGS 4M PSGS 4M 4413-0.3M
		PSGS 4M PSGS 4M 4413-0.5M
		PSGS 4M PSGS 4M 4413-0.6M
		PSGS 4M PSGS 4M 4413-1M
		PSGS 4M PSGS 4M 4413-2M
		PSGS 4M PSGS 4M 4413-5M
	M12/M8	RSSD PSGS 4M 4413-0.5M
	M8/RJ45	PSGS 4M RJ45S 4413-0.5M
		PSGS 4M RJ45S 4413-1M
		PSGS 4M RJ45S 4413-2M

Ethernet

IN-STOCK PROGRAM

# Ethernet

Ethernet

ETHERNET PATCH CORDS (CONTINUED)		
CABLE TYPE	TERMINATION TYPE	PRODUCT DESCRIPTION
840- Stranded Unshielded/4 Pair	RJ45/RJ45	RJ45 RJ45 840-1M
		RJ45 RJ45 840-2M
		RJ45 RJ45 840-5M
	M12/RJ45	RSC RJ45 840-1M
		RSC RJ45 840-2M
		RSC RJ45 840-5M
		RSC RJ45 840-10M
	841 - Stranded Shielded/4 Pair	RJ45/RJ45
RJ45S RJ45S 841-2M		
RJ45S RJ45S 841-5M		
RJ45S RJ45S 841-10M		
M12/M12		RSS RSS 841-2M
		RSS RSS 841-5M
		RSS RSS 841-10M
M12/RJ45		RSS RJ45S 841-1M
		RSS RJ45S 841-2M
		RSS RJ45S 841-5M
		RSS RJ45S 841-10M



PANEL & FIELD WIREABLE ACCESSORIES			
PIN COUNT	CONNECTOR	TYPE	PRODUCT DESCRIPTION
4 Pin	M12 to RJ45	Feed-Thru	FKSDD RJ45SF 44
	M12	PCB Mount Receptacle	FKFDD 44-PCB
	M12	Field Wireable	CMBSD 8141-0/PG9
	RJ45	Field Wireable	CONNECTOR, RJ45S IDC
5 Pin	M12	PCB Mount Receptacle	FKFD 84-PCB
	M12	Short PCB Mount Receptacle	FKFD 84-PCB/S
	RJ45	Field Wireable	CONNECTOR, FW,RJ45S 84 IDC

IN-STOCK PROGRAM



SINGLE ENDED CORDSETS					
CONNECTOR TYPE	GENDER	PLUG BODY	CABLE TYPE	CABLE TYPE	PRODUCT DESCRIPTION
M12	Male	Straight	PVC	Thin	RSC 572-0.5M
					RSC 572-1M
					RSC 572-2M



EXTENSION CORDSETS					
CONNECTOR TYPE	GENDER	PLUG BODY	CABLE TYPE	CABLE TYPE	PRODUCT DESCRIPTION
M12	Male/Female	Straight	PVC	Thin	RSC RKC 572-1M
					RSC RKC 572-2M
					RSC RKC 572-5M
					RSC RKC 572-10M
7/8" <i>minifast</i>	Male/Female	Straight	PVC	Thin	RSM RKM 572-1M
					RSM RKM 572-2M
				Thick	RSM RKM 579-1M
					RSM RKM 579-2M
					RSM RKM 579-5M
					RSM RKM 579-10M



# DeviceNet



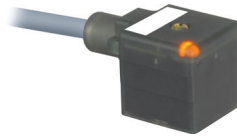
ACCESSORIES		
CONNECTOR TYPE	CONNECTORS	PRODUCT DESCRIPTION
Bus Drop Tee	7/8" with M12 Drop	RSM FKM RKM 57
	7/8"	RSM 2RKM 57
	M12	RSC 2RKC 57
Gender Changer	M12	RSC WKC 57
Terminating Resistor	M12	RSE 57-TR2
		RKE 57-TR2
	7/8"	RSM 57-TR2
		RKM 57-TR2

DeviceNet

IN-STOCK PROGRAM



# Valve Plugs

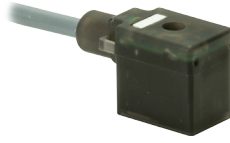


TYPE A - 18mm				
PINOUT	WIRING	VOLTAGE	CABLE TYPE	PRODUCT DESCRIPTION
2 Conductors + 1 Ground, Ground Contacts Parallel Wired	Straight	0-220V	PVC	VAS 22-A653-2M
				VAS 22-A653-5M
			TPU	VAS 22-A669-2M
				VAS 22-A669-5M
	LED	110-220V	PVC	VAS 22-C653-2M
				VAS 22-C653-5M
			TPU	VAS 22-C669-2M
				VAS 22-C669-5M
	LED/MOV	24-48V	PVC	VAS 22-D653-2M
				VAS 22-D653-5M
			TPU	VAS 22-D669-2M
		VAS 22-D669-5M		
		110-220V	PVC	VAS 22-E653-2M
				VAS 22-E653-5M
TPU	VAS 22-E669-2M			
	VAS 22-E669-5M			
LED/DIODE	24-48VDC	PVC	VAS 22-F653-2M	
			VAS 22-F653-5M	
		TPU	VAS 22-F669-2M	
			VAS 22-F669-5M	
3 Conductors + Ground	Straight	0-220V	PVC	VAS 3-A580-2M
				VAS 3-A580-5M

VALVE PLUGS

IN-STOCK PROGRAM

# Valve Plugs



VALVE PLUGS

TYPE I - 11mm				
PINOUT	WIRING	VOLTAGE	CABLE TYPE	PRODUCT DESCRIPTION
2 Conductors + 1 Ground	Straight	0-220V	PVC	VIS 2-A653-5M
			TPU	VIS 2-A669-5M
	LED	24-48V	PVC	VIS 2-B653-5M
			TPU	VIS 2-B669-5M
	LED/MOV	24-48V	PVC	VIS 2-D653-5M
			TPU	VIS 2-D669-5M
		110-220V	PVC	VIS 2-E653-5M
			TPU	VIS 2-E669-5M
	LED/DIODE	24-48VDC	PVC	VIS 2-F653-5M
			TPU	VIS 2-F669-5M



TYPE B - 10mm				
PINOUT	WIRING	VOLTAGE	CABLE TYPE	PRODUCT DESCRIPTION
2 Conductors + 1 Ground	Straight	0-220V	PVC	VBS 2-A653-5M
			TPU	VBS 2-A669-5M
	LED	24-48V	PVC	VBS 2-B653-5M
			TPU	VBS 2-B669-5M
	LED/MOV	24-48V	PVC	VBS 2-D653-5M
			TPU	VBS 2-D669-5M
	LED/DIODE	24-48VDC	PVC	VBS 2-F653-5M
			TPU	VBS 2-F669-5M

IN-STOCK PROGRAM

# Valve Plugs



TYPE C - 9.4mm				
PINOUT	WIRING	VOLTAGE	CABLE TYPE	PRODUCT DESCRIPTION
2 Conductors + 1 Ground	Straight	0-220V	PVC	TC9S 2-A653-5M
			TPU	TC9S 2-A669-5M
	LED	24V	PVC	TC9S 2-L653-5M
			TPU	TC9S 2-L669-5M
	LED/DIODES	24V	PVC	TC9S 2-P653-5M
			TPU	TC9S 2-P669-5M



TYPE C - 8mm				
PINOUT	WIRING	VOLTAGE	CABLE TYPE	PRODUCT DESCRIPTION
2 Conductors + 1 Ground	Straight	0-220V	PVC	TC8S 2-A653-5M
			TPU	TC8S 2-A669-5M
	LED	24V	PVC	TC8S 2-L653-5M
			TPU	TC8S 2-L669-5M
		110V	PVC	TC8S 2-N653-5M
			TPU	TC8S 2-N669-5M
	LED/DIODES	24V	PVC	TC8S 2-P653-5M
			TPU	TC8S 2-P669-5M



EXTENSION CORDSETS - VALVE TO M12				
PINOUT	WIRING	VOLTAGE	CABLE TYPE	PRODUCT DESCRIPTION
Type A 2 Conductors + 1 Ground, Ground Contacts Parallel Wired	Straight	0-220V	PVC	VAS 22-A653-2M-RS 5.3T
	LED/DIODE	24-48VDC	PVC	VAS 22-F653-2M-RS 5.3T
Type I 2 Conductors + 1 Ground	Straight	0-220V	PVC	VIS 2-A653-2M-RS 5.3T
	LED/DIODE	24-48VDC	PVC	VIS 2-F653-2M-RS 5.3T

VALVE PLUGS

IN-STOCK PROGRAM

# A-Size Powerfast



SINGLE ENDED CORDSETS				
PIN COUNT	GENDER	PLUG BODY	CABLE TYPE & SIZE	PRODUCT DESCRIPTION
3 Pin	Male	Straight	TPE TC-ER/14 AWG	RSM 34-2M/S4000
				RSM 34-5M/S4000
				RSM 34-10M/S4000
	Female	Straight	TPE TC-ER/14 AWG	RKM 34-2M/S4000
				RKM 34-5M/S4000
				RKM 34-10M/S4000
4 Pin	Male	Straight	TPE TC-ER/14 AWG	RSM 44-2M/S4000
				RSM 44-5M/S4000
				RSM 44-10M/S4000
	Female	Straight	TPE TC-ER/14 AWG	RKM 44-2M/S4000
				RKM 44-5M/S4000
				RKM 44-10M/S4000

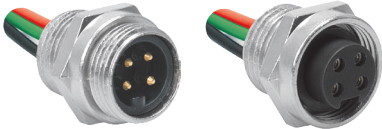


EXTENSION CORDSETS				
PIN COUNT	GENDER	PLUG BODY	CABLE TYPE & SIZE	PRODUCT DESCRIPTION
3 Pin	Male/Female	Straight	TPE TC-ER/14 AWG	RSM RKM 34-2M/S4000
				RSM RKM 34-5M/S4000
				RSM RKM 34-10M/S4000
4 Pin	Male/Female	Straight	TPE TC-ER/14 AWG	RSM RKM 44-2M/S4000
				RSM RKM 44-5M/S4000
				RSM RKM 44-10M/S4000

A-SIZE Powerfast

IN-STOCK PROGRAM

# A-Size Powerfast



RECEPTACLES			
PIN COUNT	GENDER	MOUNTING STYLE	PRODUCT DESCRIPTION
3 Pin	Male	1/2" NPT	RSF 34-0.5M/NPT
			RSF 34-2M/NPT
	Female	1/2" NPT	RKF 34-0.5M/NPT
			RKF 34-2M/NPT
4 Pin	Male	1/2" NPT	RSF 44-0.5M/NPT
			RSF 44-2M/NPT
	Female	1/2" NPT	RKF 44-0.5M/NPT
			RKF 44-2M/NPT

A-SIZE Powerfast



IN-STOCK PROGRAM

# D-Size Powerfast



SINGLE ENDED CORDSETS				
PIN COUNT	GENDER	PLUG BODY	CABLE TYPE & SIZE	PRODUCT DESCRIPTION
3 Pin	Male	Straight	PVC TC-ER/10 AWG	GSDA 30-2M/S4000
				GSDA 30-5M/S4000
				GSDA 30-10M/S4000
	Female	Straight	PVC TC-ER/10 AWG	GKDA 30-2M/S4000
				GKDA 30-5M/S4000
				GKDA 30-10M/S4000
4 Pin	Male	Straight	PVC TC-ER/10 AWG	GSDA 40-2M/S4000
				GSDA 40-5M/S4000
				GSDA 40-10M/S4000
	Female	Straight	PVC TC-ER/10 AWG	GKDA 40-2M/S4000
				GKDA 40-5M/S4000
				GKDA 40-10M/S4000



EXTENSION CORDSETS				
PIN COUNT	GENDER	PLUG BODY	CABLE TYPE & SIZE	PRODUCT DESCRIPTION
3 Pin	Male/Female	Straight	PVC TC-ER/10 AWG	GSDA GKDA 30-2M/S4000
				GSDA GKDA 30-5M/S4000
				GSDA GKDA 30-10M/S4000
4 Pin	Male/Female	Straight	PVC TC-ER/10 AWG	GSDA GKDA 40-2M/S4000
				GSDA GKDA 40-5M/S4000
				GSDA GKDA 40-10M/S4000

D-SIZE Powerfast

IN-STOCK PROGRAM

# D-Size Powerfast



RECEPTACLES			
PIN COUNT	GENDER	MOUNTING STYLE	PRODUCT DESCRIPTION
3 Pin	Male	1/2" NPT	GSDFA 30-0.5M/14.5/NPT
			GSDFA 30-2M/14.5/NPT
		3/4"NPT	GSDFA 30-0.5M/14.75/NPT
			GSDFA 30-2M/14.75/NPT
	Female	1/2" NPT	GKDFA 30-0.5M/14.5/NPT
			GKDFA 30-2M/14.5/NPT
3/4"NPT		GKDFA 30-0.5M/14.75/NPT	
		GKDFA 30-2M/14.75/NPT	
4 Pin	Male	1/2" NPT	GSDFA 40-0.5M/14.5/NPT
			GSDFA 40-2M/14.5/NPT
		3/4"NPT	GSDFA 40-0.5M/14.75/NPT
			GSDFA 40-2M/14.75/NPT
	Female	1/2" NPT	GKDFA 40-0.5M/14.5/NPT
			GKDFA 40-2M/14.5/NPT
		3/4"NPT	GKDFA 40-0.5M/14.75/NPT
			GKDFA 40-2M/14.75/NPT



TEES		
PIN COUNT	DROP STYLE	PRODUCT DESCRIPTION
3 Pin	D-Size Power	GSDA/2GKDA 30
	A-Size Power	GSDA/GKDA/RKM 34
4 Pin	D-Size Power	GSDA/2GKDA 40
	A-Size Power	GSDA/GKDA/RKM 44



FIELD WIREABLES			
PIN COUNT	GENDER	PLUG BODY	PRODUCT DESCRIPTION
3 Pin	Male	Straight	GSDA 30-0
	Female	Straight	GKDA 30-0
4 Pin	Male	Straight	GSDA 40-0
	Female	Straight	GKDA 40-0

D-SIZE Powerfast

IN-STOCK PROGRAM

## Notes:



## Notes:

**Notes:**

# CONNECTIVITY IN-STOCK PROGRAM


Turck sells its products through Authorized Distributors. These distributors provide our customers with technical support, service and local stock. Turck distributors are located nationwide – including all major metropolitan marketing areas.

For Application Assistance or for the location of your nearest Turck distributor, call:  
**1-800-544-7769**

Specifications in this manual are subject to change with out notice. Turck also reserves the right to make modifications and makes no guarantee of the accuracy of the information contained herein.

Literature and Media questions or concerns?  
Contact Marketing Communications Turck USA – [media@turck.com](mailto:media@turck.com)

# TURCK



28 subsidiaries and over  
60 representations worldwide!

**Printed in USA**

©2015 by Turck Inc. All rights reserved. No part of the  
publication may be reproduced without written permission.

B2404 B 11/15

[www.turck.com](http://www.turck.com)